

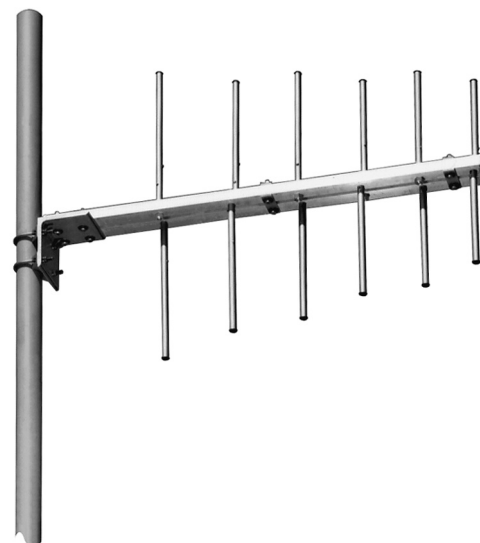
# CL7-220

## Log-Periodic Antenna 216—225 MHz (broadband)

**KATHREIN**

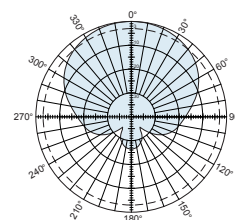
The KUSA CL7-220 broadband log-periodic antenna is intended for use in professional fixed-station applications in the 216—225 MHz band. It features:

- Super heavy-duty construction.
- Anodized aluminum elements.
- Easy element replacement if necessary.
- Double-boom of 1 x 1.5 inch 6061-T6 rectangular tube.
- High front-to-back and front-to-side ratios.

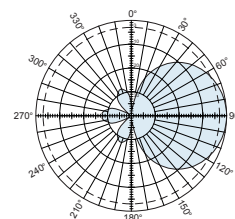


| Specifications             |   |
|----------------------------|---|
| Frequency range            | 216—225 MHz (broadband)                             |
| Gain                       | 9 dBi   |
| Impedance                  | 50 ohms   |
| VSWR                       | <1.5:1  |
| Polarization               | Vertical  |
| Front-to-back ratio        | 25 dB   |
| Maximum input power        | 500 watts (at 50°C)                                 |
| H-plane beamwidth          | 80 degrees (half-power)                             |
| E-plane beamwidth          | 52 degrees (half-power)                             |
| Connector                  | N female  |
| Weight                     | 12 lb (5.4 kg)                                      |
| Dimensions                 | 42 x 28.5 inches<br>(1067 x 724 mm)                 |
| Equivalent flat plate area | 1.2 ft <sup>2</sup> (0.11 m <sup>2</sup> )          |
| Wind survival rating*      | 140 mph (225 kph)                                   |
| Shipping dimensions        | 44 x 11 x 6 inches<br>(1118 x 279 x 152 mm)         |
| Shipping weight            | 16.0 lb (7.3 kg)                                    |
| Mounting                   | For masts of 2.0 to 2.375 inch<br>(51 to 60 mm) OD. |

\*Mechanical design is based on environmental conditions as stipulated in TIA-222-G-2 (December 2009) and/or ETS 300 019-1-4 which include the static mechanical load imposed on an antenna by wind at maximum velocity. See the Engineering Section of the catalog for further details.



H-plane  
Horizontal pattern — V-polarization



E-plane  
Vertical pattern — V-polarization

10118b subject to alteration

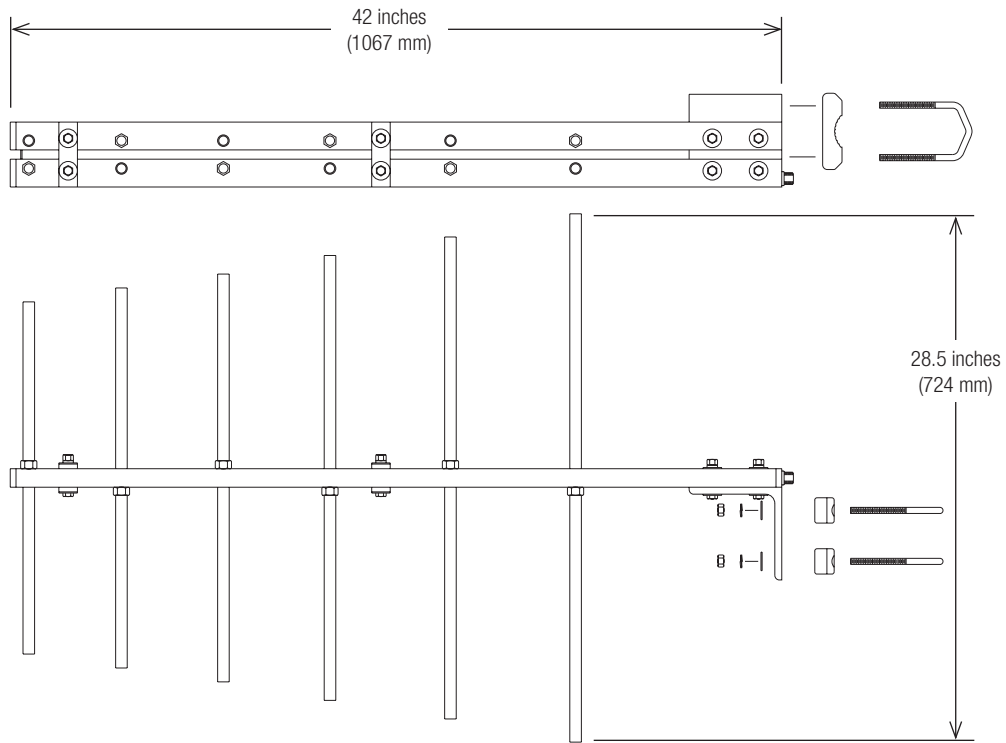


All specifications are subject to change without notice.  
The latest specifications are available at [www.kathreinusa.com](http://www.kathreinusa.com)

# CL7-220

Log-Periodic Antenna  
216—225 MHz (broadband)

# KATHREIN



10118b subject to alteration

All specifications are subject to change without notice.  
The latest specifications are available at [www.kathreinusa.com](http://www.kathreinusa.com)