

CL7-150/HCM, CL7-150/URM

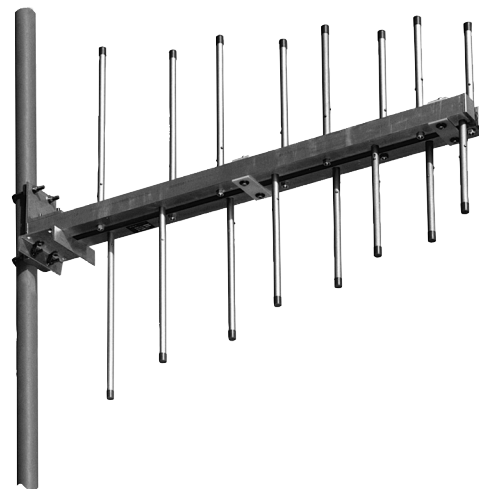
Log-Periodic Antenna

147–174 MHz

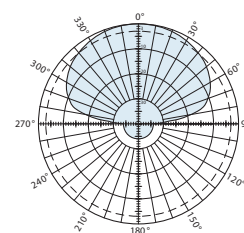
KATHREIN

The KUSA CL7-150 broadband log-periodic antenna is intended for use in professional fixed-station applications in the 147–174 MHz band. It features:

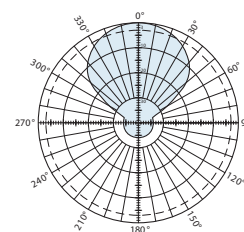
- Heavy-duty construction.
- Anodized, double-laminated heavy wall 6061-T6 aluminum tubing elements.
- Easy element replacement.
- Double-boom of two-inch 6061-T6 square aluminum tube.
- High front-to-back and front-to-side ratios, without minor lobes.
- Excellent performance, even in icing conditions.



Specifications	
Frequency range	147–174 MHz
Gain	9.3 dBi
Impedance	50 ohms
VSWR	<1.5:1
Polarization	Horizontal or vertical
Front-to-back ratio	>25 dB
Maximum input power	250 watts (at 50°C)
H-plane beamwidth	82 degrees (half-power)
E-plane beamwidth	48 degrees (half-power)
Connector	N female
Weight	25 lb (11.4 kg)
Dimensions	53.3 x 40.3 inches (maximum) (1353 x 1022 mm)
Wind load at 100 mph (161 kph)	
Front	63 lbf (280 N)
Wind survival rating*	120 mph (193 kph)
Shipping dimensions	59 x 9 x 8 inches (1499 x 229 x 203 mm)
Shipping weight	30.0 lb (13.6 kg)
Mounting	For masts of 2.375 inch (60 mm) OD.
CL7-150/HCM	Horizontal center-mount
CL7-150/URM	Horizontal or vertical rear-mount



H-plane
Horizontal pattern — V-polarization
Vertical pattern — H-polarization



E-plane
Horizontal pattern — H-polarization
Vertical pattern — V-polarization

* Mechanical design is based on environmental conditions as stipulated in TIA-222-G-2 (December 2009) and/or ETS 300 019-1-4 which include the static mechanical load imposed on an antenna by wind at maximum velocity. See the Engineering Section of the catalog for further details.

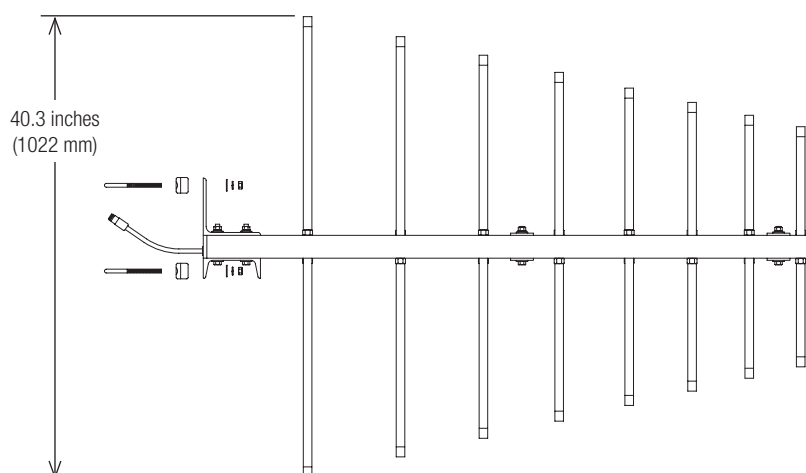
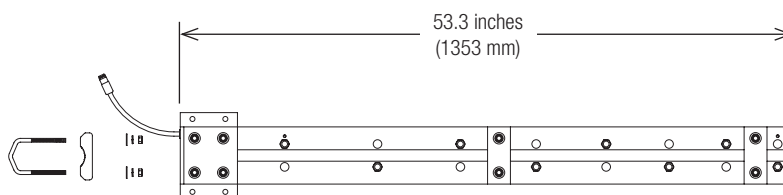
10239e subject to alteration



All specifications are subject to change without notice.
The latest specifications are available at www.kathreinusa.com

CL7-150/HCM, CL7-150/URM
 Log-Periodic Antenna
 147—174 MHz

KATHREIN



CL7-150/URM
 (Shown vertically polarized)

Order information

Model	Description
CL7-150/HCM	Horizontal center-mount antenna
CL7-150/URM	Horizontal or vertical rear-mount antenna

10239e subject to alteration