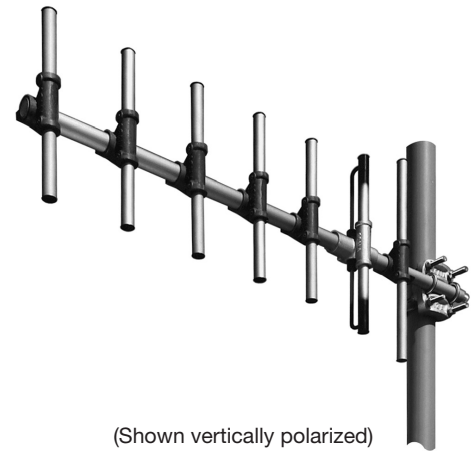


CA7 Series
YAGI ANTENNA
 406 to 512 MHz

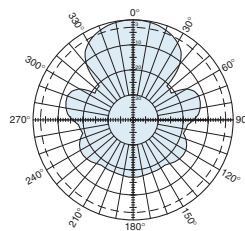
The KUSA CA7 series yagi antennas are intended for use in professional fixed-station applications in the 406–512 MHz band. They feature:

- Internal balun and dipole feedpoint sealed within the boom assembly.
- Balanced feed system with no capacitors for superior performance in icing conditions.
- All aluminum components anodized for corrosion resistance.
- Heavy wall anodized aluminum pipe and tubing.
- Heavy duty aluminum castings and stainless steel hardware.
- Entire antenna at DC ground potential.
- Dual and quad arrays available.



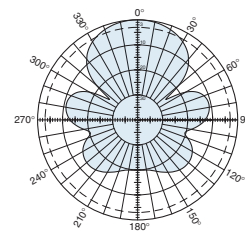
(Shown vertically polarized)

CA7-410 CA7-460
 CA7-480 CA7-490



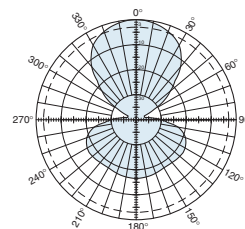
H-plane
 Horizontal pattern — V-polarization
 Vertical pattern — H-polarization

CA7-500



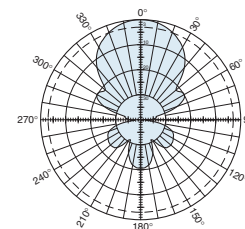
H-plane
 Horizontal pattern — V-polarization
 Vertical pattern — H-polarization

CA7-410 CA7-460
 CA7-480 CA7-490



E-plane
 Horizontal pattern — H-polarization
 Vertical pattern — V-polarization

CA7-500



E-plane
 Horizontal pattern — H-polarization
 Vertical pattern — V-polarization

10106d subject to alteration



All specifications are subject to change without notice.
 The latest specifications are available at www.kathreinusa.com

CA7 Series
YAGI ANTENNA
406 to 512 MHz

KATHREIN

Specifications	CA7-410
Frequency range	406—420 MHz
Gain	12 dBi
Impedance	50 ohms
VSWR	<1.35:1
Polarization	Horizontal or vertical
Front-to-back ratio	>18 dB
Maximum input power	250 watts (at 50°C)
H-plane beamwidth	53 degrees (half-power)
E-plane beamwidth	41 degrees (half-power)
Connector	N female
Weight	6.5 lb (2.95 kg)
Dimensions	44 x 16.5 inches (1118 x 419 mm)
Wind load	at 100 mph (161 kph)
Front	21 lbf (93 N)
Wind survival rating*	120 mph (193 kph)
Shipping dimensions	48 x 26 x 6 inches (maximum) (1219 x 660 x 152 mm)
Shipping weight	12 lb (5.4 kg)
Mounting	For masts of 2.375 inches (60mm) OD.

Specifications	CA7-460	CA7-480
Frequency range	450—470 MHz	470—490 MHz
Gain	12 dBi	12 dBi
Impedance	50 ohms	50 ohms
VSWR	<1.35:1**	<1.35:1
Polarization	Horizontal or vertical	Horizontal or vertical
Front-to-back ratio	>18 dB	>18 dB
Maximum input power	250 watts (at 50°C)	250 watts (at 50°C)
H-plane beamwidth	53 degrees (half-power)	53 degrees (half-power)
E-plane beamwidth	41 degrees (half-power)	41 degrees (half-power)
Connector	N female	N female
Weight	6.5 lb (2.95 kg)	6.5 lb (2.95 kg)
Dimensions	44 x 16.5 inches (1118 x 419 mm)	44 x 16.5 inches (1118 x 419 mm)
Wind load	at 100 mph (161 kph)	at 100 mph (161 kph)
Front	21 lbf (93 N)	21 lbf (93 N)
Wind survival rating*	120 mph (193 kph)	120 mph (193 kph)
Shipping dimensions	48 x 26 x 6 inches (maximum) (1219 x 660 x 152 mm)	48 x 26 x 6 inches (maximum) (1219 x 660 x 152 mm)
Shipping weight	12 lb (5.4 kg)	12 lb (5.4 kg)
Mounting	For masts of 2.375 inches (60mm) OD.	For masts of 2.375 inches (60mm) OD.

* Mechanical design is based on environmental conditions as stipulated in TIA-222-G-2 (December 2009) and/or ETS 300 019-1-4 which include the static mechanical load imposed on an antenna by wind at maximum velocity. Contact KUSA for further details.

**VSWR for 440-470 MHz <1.5:1

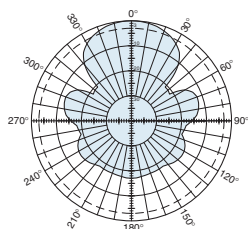
10106d subject to alteration

CA7 Series
YAGI ANTENNA
406 to 512 MHz

Specifications	CA7-490	CA7-500
Frequency range	480—500 MHz	490—512 MHz
Gain	12 dBi	12 dBi
Impedance	50 ohms	50 ohms
VSWR	<1.35:1	<1.35:1
Polarization	Horizontal or vertical	Horizontal or vertical
Front-to-back ratio	>18 dB	>18 dB
Maximum input power	250 watts (at 50°C)	250 watts (at 50°C)
H-plane beamwidth	53 degrees (half-power)	53 degrees (half-power)
E-plane beamwidth	41 degrees (half-power)	41 degrees (half-power)
Connector	N female	N female
Weight	6.5 lb (2.95 kg)	6.5 lb (2.95 kg)
Dimensions	44 x 16.5 inches (1118 x 419 mm)	44 x 16.5 inches (1118 x 419 mm)
Wind load	at 100 mph (161 kph)	at 100 mph (161 kph)
Front	21 lbf (93 N)	21 lbf (93 N)
Wind survival rating*	120 mph (193 kph)	120 mph (193 kph)
Shipping dimensions	48 x 26 x 6 inches (maximum) (1219 x 660 x 152 mm)	48 x 26 x 6 inches (maximum) (1219 x 660 x 152 mm)
Shipping weight	12 lb (5.4 kg)	12 lb (5.4 kg)
Mounting	For masts of 2.375 inches (60mm) OD.	For masts of 2.375 inches (60mm) OD.

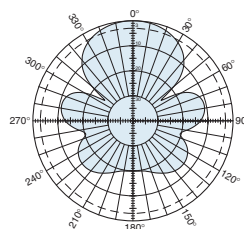
* Mechanical design is based on environmental conditions as stipulated in TIA-222-G-2 (December 2009) and/or ETS 300 019-1-4 which include the static mechanical load imposed on an antenna by wind at maximum velocity. Contact KUSA for further details.

CA7-410 CA7-460
 CA7-480 CA7-490



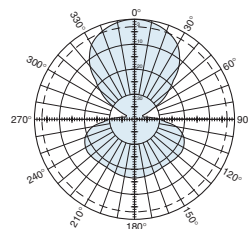
H-plane
 Horizontal pattern — V-polarization
 Vertical pattern — H-polarization

CA7-500



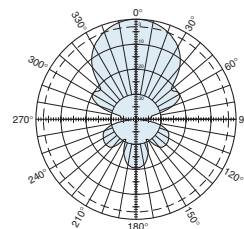
H-plane
 Horizontal pattern — V-polarization
 Vertical pattern — H-polarization

CA7-410 CA7-460
 CA7-480 CA7-490



E-plane
 Horizontal pattern — H-polarization
 Vertical pattern — V-polarization

CA7-500



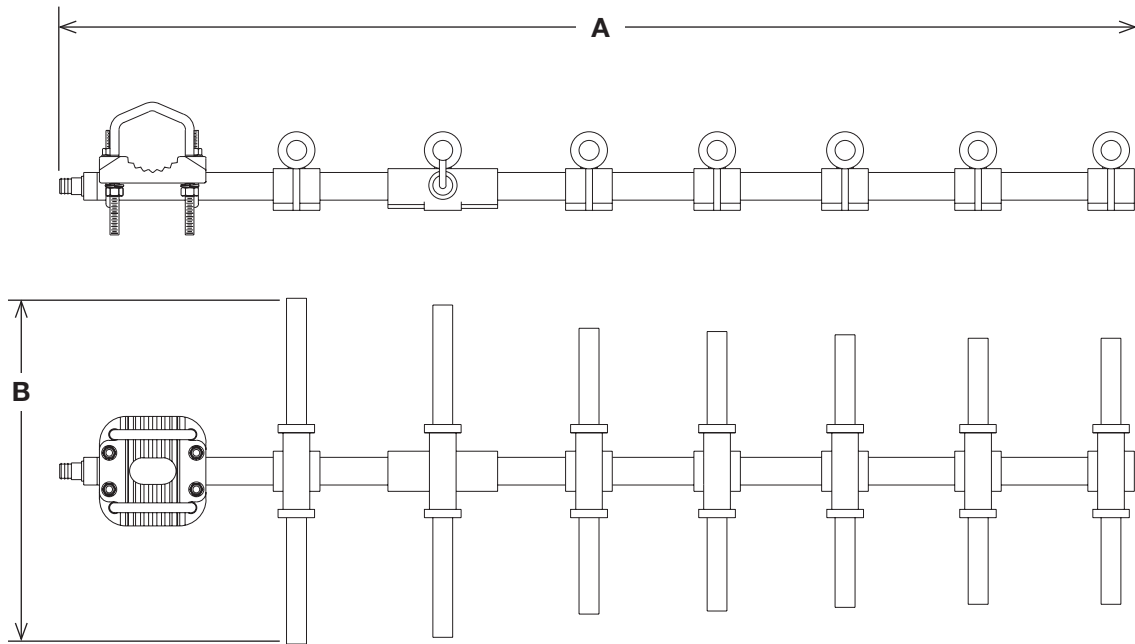
E-plane
 Horizontal pattern — H-polarization
 Vertical pattern — V-polarization

10106d subject to alteration

All specifications are subject to change without notice.
 The latest specifications are available at www.kathreinusa.com

CA7 Series
YAGI ANTENNA
 406 to 512 MHz

KATHREIN



(Shown vertically polarized)

Dimensions

Model	A	B
CA7-410	44 inches (1118 mm)	16.5 inches (419 mm)
CA7-460	39.9 inches (1013 mm)	14.9 inches (378 mm)
CA7-480	38.1 inches (968 mm)	13.1 inches (333 mm)
CA7-490	37.6 inches (956 mm)	12.2 inches (311 mm)
CA7-500	36.5 inches (927 mm)	12.5 inches (318 mm)

Order Information

Model	Description
CA7-410	406–420 MHz Yagi antenna
CA7-460	450–470 MHz Yagi antenna
CA7-480	470–490 MHz Yagi antenna
CA7-490	480–500 MHz Yagi antenna
CA7-500	490–512 MHz Yagi antenna

10106d subject to alteration