

# 1-Port Omni Antenna Vertical Polarization Indoor and outdoor use

790–960 1695–2700

**KATHREIN**

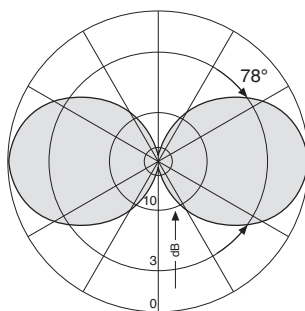
V

## 1-Port Omni 790–960/1695–2700 360° 2dBi

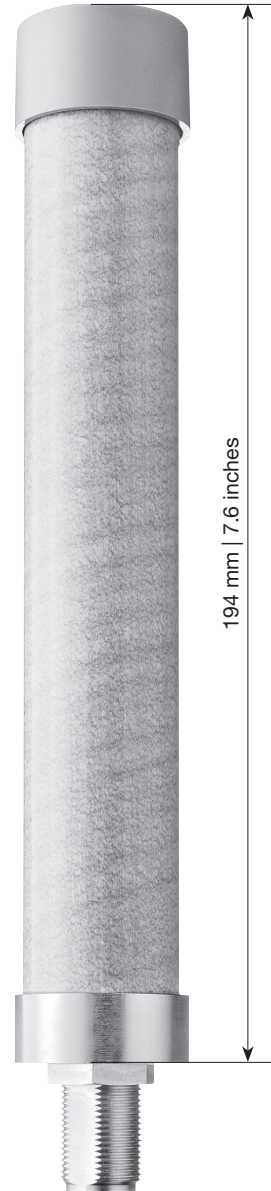
Type No.	<b>80010847</b>		
Input	1 x N female		
Connector position	Bottom or top		
Frequency range	MHz	790 – 960 / 1695 – 2700	
VSWR	< 2.0		
Gain	dBi	2	
Impedance	$\Omega$	50	
Intermodulation IM3	dBc	< -150 (2 x 43 dBm carrier)	
Polarization	Vertical		
Max. power	W	50 (at 50 °C ambient temperature)	
Weight	g	200	
	lb	0.44	
Wind load (at 150 km/h)	N	6	
	lbf	1.3	
Radome diameter	mm	30	
	inches	1.2	
Height	mm	194	
	inches	7.6	
Fire load	kWh	0.19	

Material: Radiator: Brass.  
Radome: Fiberglass, colour: White.

Mounting: One hole mounting (16 mm | 0.6 inches diameter) to surfaces of max. 10 mm | 0.4 inches thickness.



Vertical Pattern



936.4398/c Subject to alteration.

**Any previous data sheet issues have now become invalid.**

All specifications are subject to change without notice.  
The latest specifications are available at [www.kathreinusa.com](http://www.kathreinusa.com)

**80010847** Page 1 of 1