

1-Port Omni Antenna Vertical Polarization Indoor and outdoor use

694-960/1695-2700

V

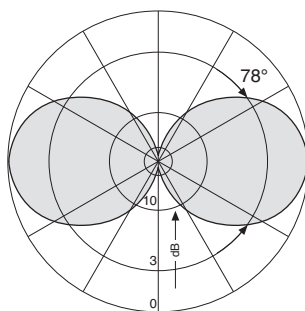
KATHREIN

1-Port Omni 694-960/1695-2700 360° 2dBi

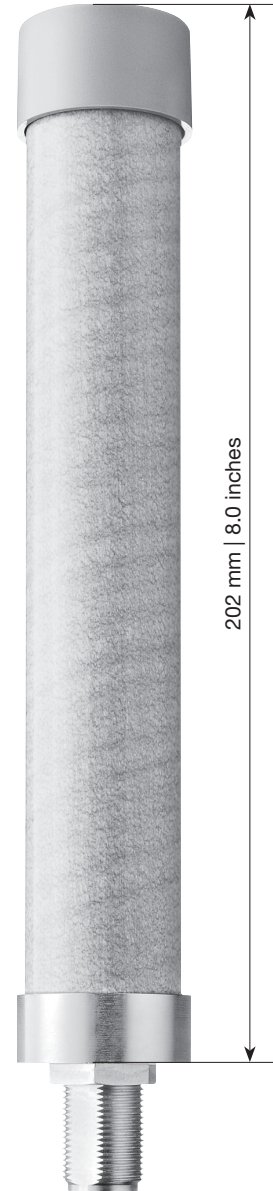
Type No.	80010846			
Input	1 x N female			
Connector position	Bottom or top			
Frequency range	MHz	694 - 960 / 1695 - 2700		
VSWR	MHz	694 - 864 < 2.0	864 - 894 < 2.2	894 - 960 < 2.5
				1695 - 2700 < 2.0
Gain	dBi	2		
Impedance	Ω	50		
Intermodulation IM3	dBc	< -150 (2 x 43 dBm carrier)		
Polarization		Vertical		
Max. power	W	50 (at 50 °C ambient temperature)		
Weight	g	210		
	lb	0.46		
Wind load (at 150 km/h)	N	6		
	lbf	1.3		
Radome diameter	mm	30		
	inches	1.2		
Height	mm	202		
	inches	8.0		
Fire load	kWh	0.2		

Material: Radiator: Brass.
Radome: Fiberglass, colour: White.

Mounting: One hole mounting (16 mm | 0.6 inches diameter) to surfaces of max. 10 mm | 0.4 inches thickness.



Vertical Pattern



936.4591/c Subject to alteration.

All specifications are subject to change without notice.
The latest specifications are available at www.kathreinusa.com

80010846 Page 1 of 1