

CL7-300

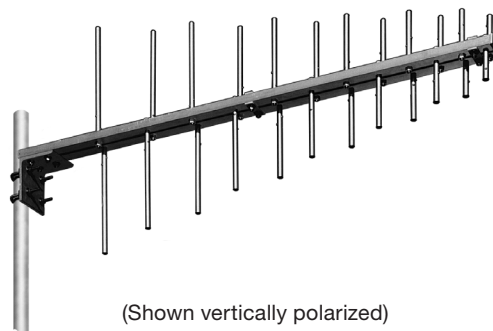
Log-Periodic Antenna

225—400 MHz

KATHREIN

The KUSA CL7-300 broadband log-periodic antenna is intended for use in professional fixed-station applications in the 225—400 MHz band. It features:

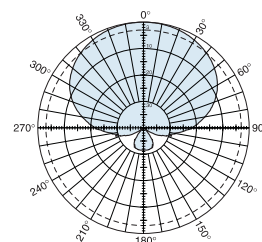
- Heavy-duty construction.
- Anodized aluminum elements.
- Easy element replacement if necessary.
- Double-boom of 6061-T6 rectangular aluminum tube.
- High front-to-back and front-to-side ratios without minor lobes.



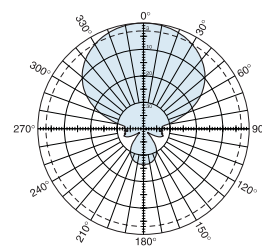
(Shown vertically polarized)

Specifications	
Frequency range	225—400 MHz
Gain	9.5 dBi
Impedance	50 ohms
VSWR	<1.5:1
Polarization	Horizontal or vertical
Front-to-back ratio	>25 dB
Maximum input power	250 watts (at 50°C)
H-plane beamwidth	80 degrees (half-power)
E-plane beamwidth	58 degrees (half-power)
Connector	N female
Weight	17 lb (7.7 kg)
Dimensions	62.1 x 28 inches (1577 x 711 mm)
Wind load at 100 mph (161 kph)	33 lbf (146.8 N)
Wind survival rating*	100 mph (161 kph)
Shipping dimensions	64 x 11 x 6 inches (1626 x 279 x 152 mm)
Shipping weight	21 lb (9.5 kg)
Mounting	For masts of 2.0 to 2.375 inch (51 to 60 mm) OD.

*Mechanical design is based on environmental conditions as stipulated in TIA-222-G-2 (December 2009) and/or ETS 300 019-1-4 which include the static mechanical load imposed on an antenna by wind at maximum velocity. See the Engineering Section of the catalog for further details.



H-plane
Horizontal pattern — V-polarization
Vertical pattern — H-polarization



E-plane
Horizontal pattern — H-polarization
Vertical pattern — V-polarization

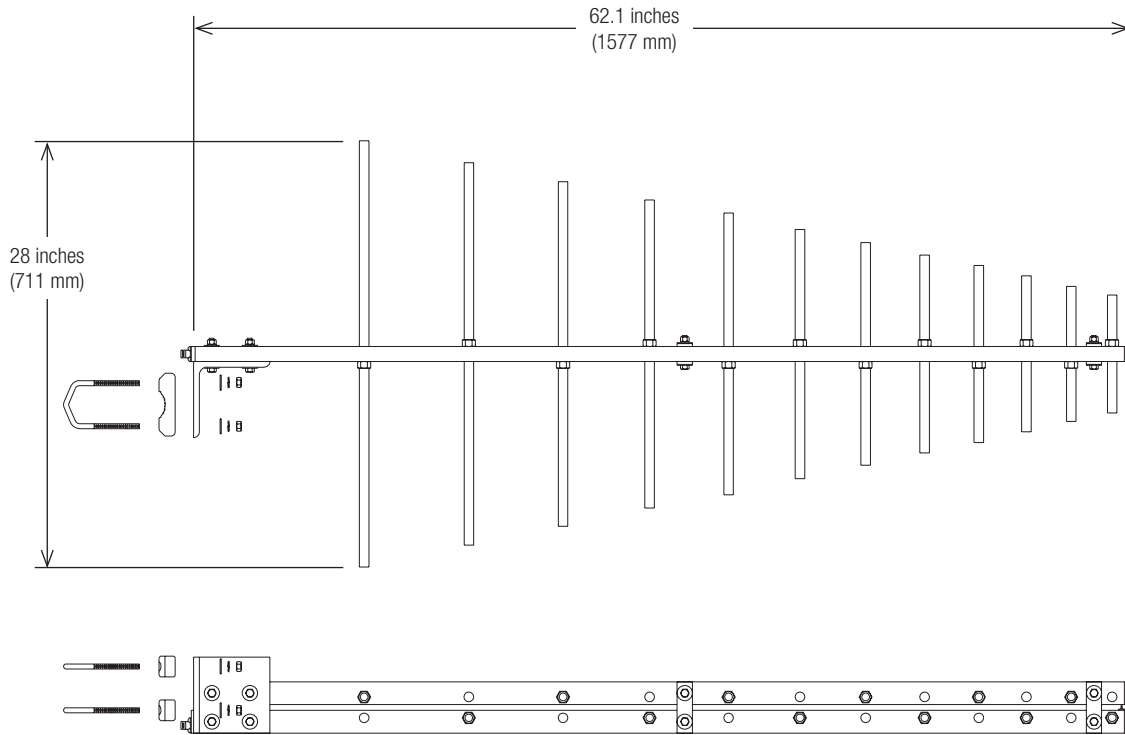
10153d subject to alteration



All specifications are subject to change without notice.
The latest specifications are available at www.kathreinusa.com

CL7-300
Log-Periodic Antenna
225—400 MHz

KATHREIN



(Shown vertically polarized)

10153d subject to alteration