

Directional Antennas Vertical Polarization

960–1215

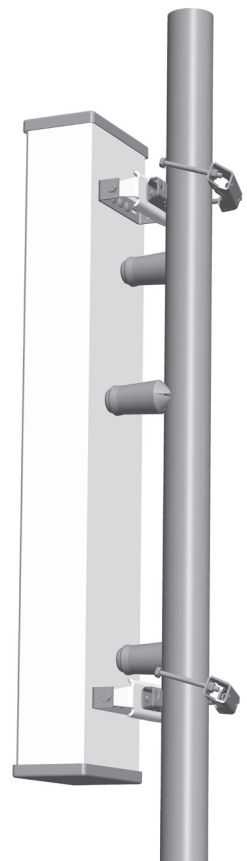
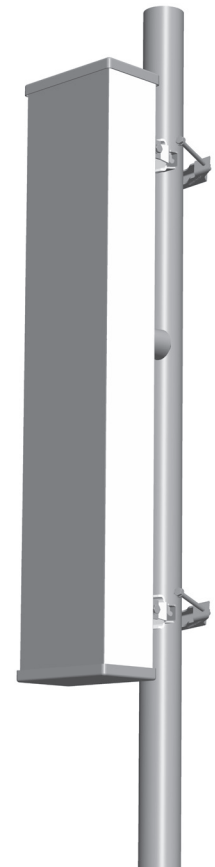
V

KATHREIN
Antennen · Electronic

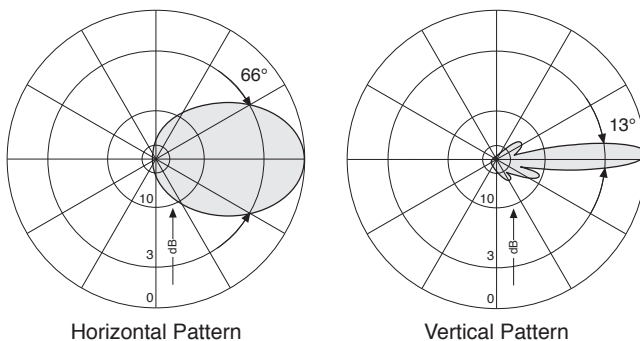
The directional antennas 716405 and 88010003 have been specially designed for DME ground beacons and particularly for DMS-ILS colocation. The antenna provides a pattern with a cosecant-squared shaping. The antenna is equipped with two monitoring probes inside.

Type No.	716405	88010003
Inputs (antenna and monitoring probes)	N female connector (protected by a rubber cap)	
Connector positions	Rearside	
Frequency range	960 – 1215 MHz	
VSWR	< 1.6 (antenna input)	
Gain (ref. $\lambda/2$ dipole)	14 dBd	
Impedance	50 Ω	
Coupling attenuation	25 \pm 3 dB	20 \pm 3 dB (antenna/monitoring probes)
Beam tilt	+ 4° \pm 0.5°	
R. F. peak power	10 kW; duty cycle 2%	
Polarization	Vertical	
Temperature range	–40 °C to +60 °C ambient	
Weight	12 kg	
Wind load	Frontal: 675 N (at 160 km/h) Lateral: 350 N (at 160 km/h) Rearside: 650 N (at 160 km/h)	
Max. wind velocity	200 km/h (incl. 1/2" radial ice)	
Packing size	1420 x 360 x 250 mm	
Height/width/depth	1305 / 255 / 150 mm	

- Material:** Radiators: Brass. Reflector screen: High strength aluminum alloy sheet. Cover: Fiberglass. Clamps: Hot dip galvanized steel. All screws and nuts: Stainless steel
- Mounting:** To pipes of 40 – 95 mm OD by means of mounting clamps, supplied. Clamps for thicker masts see second page.
- Grounding:** The antenna is DC grounded via mounting clamps. The inner conductors are also DC grounded.
- Scope of supply:** Antenna including clamps and three weather protective rubber caps for the connectors.



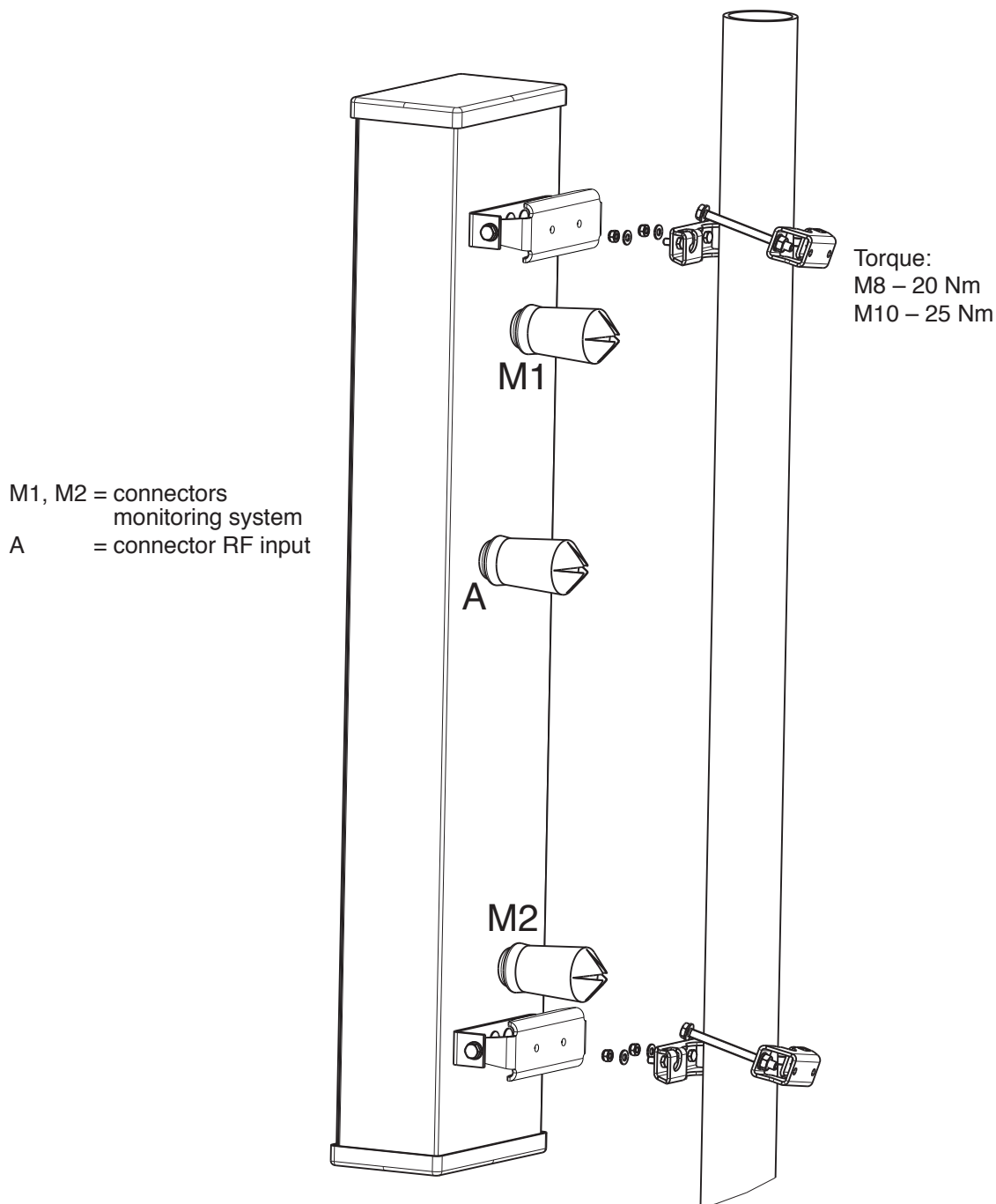
Radiation Patterns (at mid-band)



936.4352 Subject to alteration.

All specifications are subject to change without notice.
The latest specifications are available at www.kathreinusa.com

716405, 88010003 Page 1 of 2



Accessories

Type No.	Description	Remarks	Weight approx.	Units per antenna
738546	1 clamp	Mast: 42 – 115 mm diameter	1.1 kg	2 (included in the scope of supply)
731651	1 clamp	Mast: 28 – 60 mm diameter	0.8 kg	2 (order separately if required)
85010002	1 clamp	Mast: 110 – 220 mm diameter	2.7 kg	2 (order separately if required)
85010003	1 clamp	Mast: 210 – 380 mm diameter	4.8 kg	2 (order separately if required)
85010060	1 offset	in combination with the clamps	1.3 kg	2 (order separately if required)

For other special items consult our catalogue.