

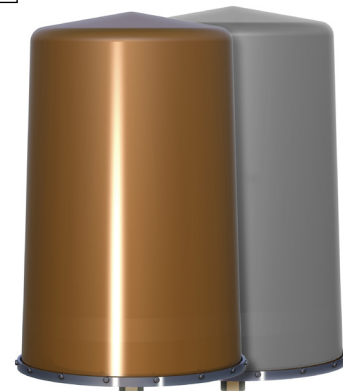
10-Port Omni Antenna
Frequency Range
Dual Polarization
HPBW
Fixed Electr. DT

Y1	Y2	Y3	Y4	Y5
1695-2690	1695-2690	3550-3700	3550-3700	5150-5925
X	X	X	X	X
360°	360°	360°	360°	360°
0°	0°	5°	5°	0°

KATHREIN

10-Port 1695–2690/3550–3700/5150–5925 360°/360°/360°/360°/360°
 6.5/6.5/6.5/6.5/5.0dBi 0°/0°/5°/5°/0°

Type No.	84010555	84010556
Radome color	Brown	Grey



Specifications		Y1			
		1695–2690			
Frequency range	MHz	1695–1850	1850–2200	2300–2360	2490–2690
Polarization		+45, -45	+45, -45	+45, -45	+45, -45
Gain	dBi	5.4	6.1	6.9	7.2
Horizontal Pattern:					
Half-power beamwidth	°	360 with -7 dB null, typical	360 with -7 dB null, typical	360 with -8 dB null, typical	360 with -9 dB null, typical
Vertical pattern:					
Half-power beamwidth	°	41	33	26	23
Electrical tilt	°	0	0	0	0
Impedance	Ohms	50	50	50	50
VSWR		< 1.5	< 1.5	< 1.5	< 1.65
Isolation	Intrasystem Intersystem	dB > 23 > 28	> 23 > 28	> 23 > 28	> 23 > 28
Intermodulation IM3	dBc	< -153 (2 x 43 dBm carrier)			
Max. power per input	W	150 (at 50°C ambient temperature)			

Values based on NGMN-P-BASTA (version 9.6) requirements.

2:1010 rev.-a, subject to alteration

All specifications are subject to change without notice.
 The latest specifications are available at www.kathreinusa.com

Specifications		Y2			
		1695–2690			
Frequency range	MHz	1695–1850	1850–2200	2300–2360	2490–2690
Polarization		+45, -45	+45, -45	+45, -45	+45, -45
Gain	dBi	5.6	6.1	6.6	6.8
Horizontal Pattern:					
Half-power beamwidth	°	360 with -7 dB null, typical	360 with -7 dB null, typical	360 with -8 dB null, typical	360 with -9 dB null, typical
Vertical pattern:					
Half-power beamwidth	°	37	33	27	29
Electrical tilt	°	0	0	0	0
Impedance	Ohms	50	50	50	50
VSWR		< 1.5	< 1.5	< 1.5	< 1.65
Isolation	Intrasystem Intersystem	dB > 23 > 28	> 23 > 28	> 23 > 28	> 23 > 28
Intermodulation IM3	dBc	< -153 (2 x 43 dBm carrier)			
Max. power per input	W	150 (at 50°C ambient temperature)			

Values based on NGMN-P-BASTA (version 9.6) requirements.

Specifications		Y3	Y4
Frequency range	MHz	3550–3700	3550–3700
Polarization		+45, -45	+45, -45
Gain	dBi	6.8	7.0
Horizontal Pattern:			
Half-power beamwidth	°	360 with -12 dB null, typical	360 with -12 dB null, typical
Vertical pattern:			
Half-power beamwidth	°	26	24
Electrical tilt	°	5	5
Impedance	Ohms	50	50
VSWR		< 1.5	< 1.5
Isolation	Intrasystem Intersystem	dB > 25 > 28	> 25 > 28
Intermodulation IM3	dBc	N/A	N/A
Max. power per input	W	100 (at 50°C ambient temperature)	100 (at 50°C ambient temperature)

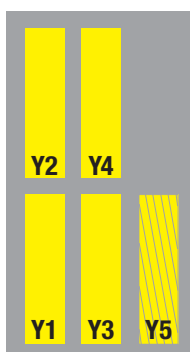
Values based on NGMN-P-BASTA (version 9.6) requirements.

21010 rev.-a, subject to alteration

Specifications		Y5				
Frequency range	MHz	5150—5350	5350—5470	5470—5725	5725—5850	5850—5925
Polarization		+45, -45				
Gain (typical/maximum)	dBi	5.0/6.0	5.0/6.0	4.7/6.0	4.8/6.0	4.3/6.0
Horizontal Pattern:						
Half-power beamwidth	°	360 with -15 dB null, typical				
Vertical pattern:						
Half-power beamwidth	°	26	25	24	22	21
Electrical tilt	°	0				
Impedance	Ohms	50				
VSWR		< 1.5	< 1.7	< 1.7	< 1.5	< 1.7
Isolation	Intrasystem Intersystem					> 25 > 28
Intermodulation IM3	dBc	N/A				
Max. power per input	W	50 (at 50°C ambient temperature)				
Max. input power*	W	.25	—	.25	1.0	—

Values based on NGMN-P-BASTA (version 9.6) requirements.

*To comply with EIRP restrictions for FCC Title 47 part 15 for fixed outdoor point to multi-point applications.



Mechanical specifications		
Input	10 x 4.3-10 connector female	
Connector position	Bottom	
Weight	kg lb	15.0 33.0
Wind load (at Rated Wind Speed: 150km/h)	N lbf	138 32
Max. wind velocity	km/h mph	242 150
Mechanical interface	Hex nut (requires a 1-1/2" wrench) Torque setting: 122 Nm 90 lbf-ft	
Packing size	mm inches	755 x 480 x 480 29.7 / 18.9 / 18.9
Height / diameter	mm inches	626 / 407 24.6 / 16

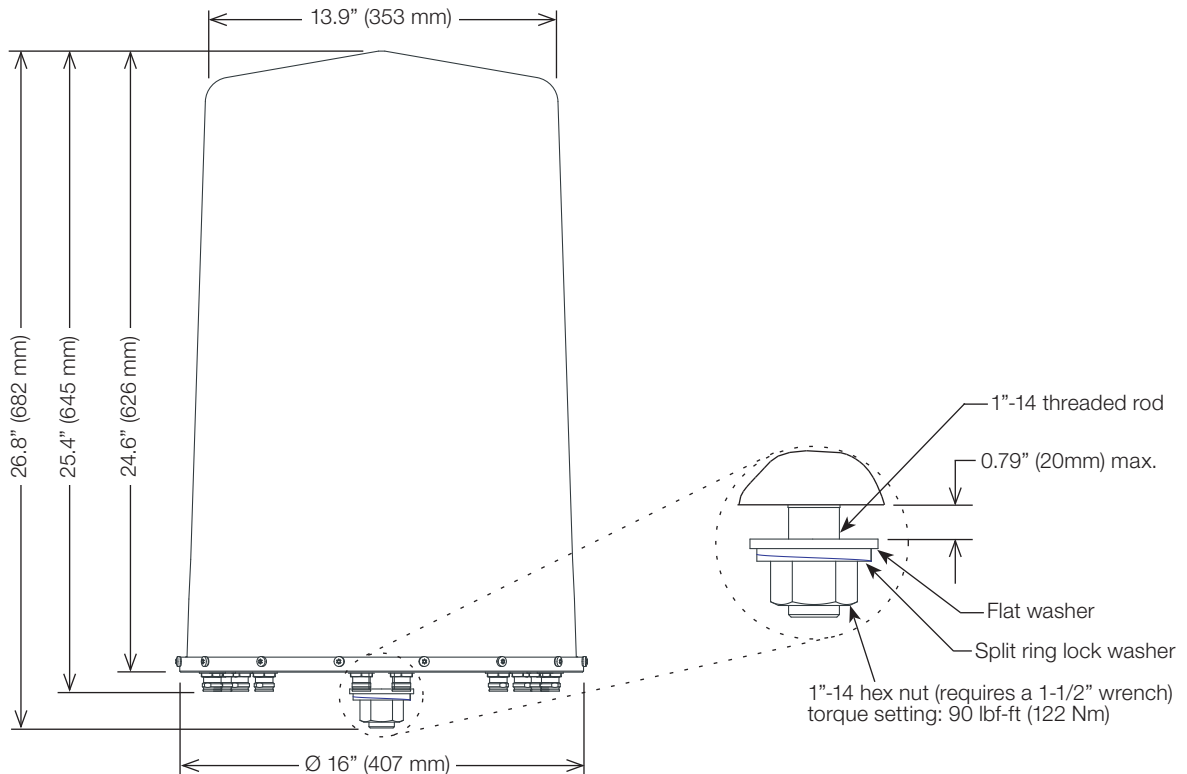
21010 rev-a, subject to alteration

Accessories

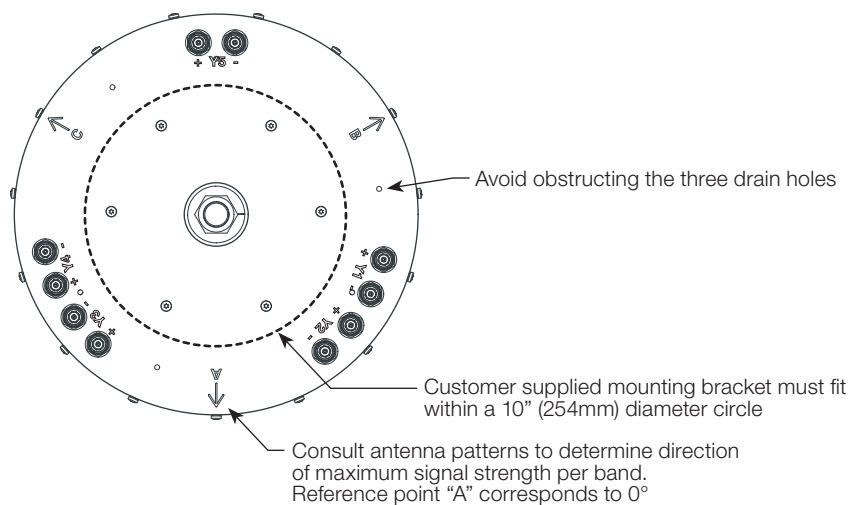
General Information

Antenna area: Reflector screen: Aluminum.
 Radiator: Tin plated zinc.
 Cylindrical fiberglass radome: The max. radome diameter is 407mm (16").
 Fiberglass material guarantees optimum performance with regards to stability, stiffness, UV resistance and painting.
 Radome color 84010555: **Brown**.
 Radome color 84010556: **Grey**.

Mounting: Designed to be mounted on top of a utility pole using a custom mounting bracket supplied by the customer.



All dimensions in inches (mm)



21010 rev-a, subject to alteration